

LES CHAUMES WIND FARM



NEWS BULLETIN N°1



Dear Sir or Madam,

In 2018, talks on plans for a wind farm got underway between Solvéo and the town council of Paizay-Naudouin-Embourie.

In February 2019, the town council voted for a feasibility study to begin for this project planned in its jurisdiction. For this feasibility study, the reference situation has now been largely established. Today, we are choosing between options to decide on the definitive project. As this key phase approaches, we wanted to update you on the project's progress and let you know all the undertakings Solvéo has already made in regard to the local area so that Les Chaumes wind farm respects its host zone.

Through this news bulletin, we are also inviting you to ask us, as from today, any questions you might have about the project and to let us know if you would be interested in taking part in talks we will soon be organising. These sessions will take place with the protective hygiene measures and social distancing the French government has recommended.

In the meantime, feel free to contact me. Thank you for your interest in this project.

Enjoy reading our news,

Adeline Mancel, **Project Manager**



WIND, TOMORROW'S ENERGY TODAY'S NEEDS

Wind is a free, local, green, and limitless source of energy. It is already contributing to the security of our energy supply.

On 29 March, wind energy produced over 20% of electricity in France's network.*

**Source: France Énergie Éolienne*



ABOUT SOLVÉO ENERGIE

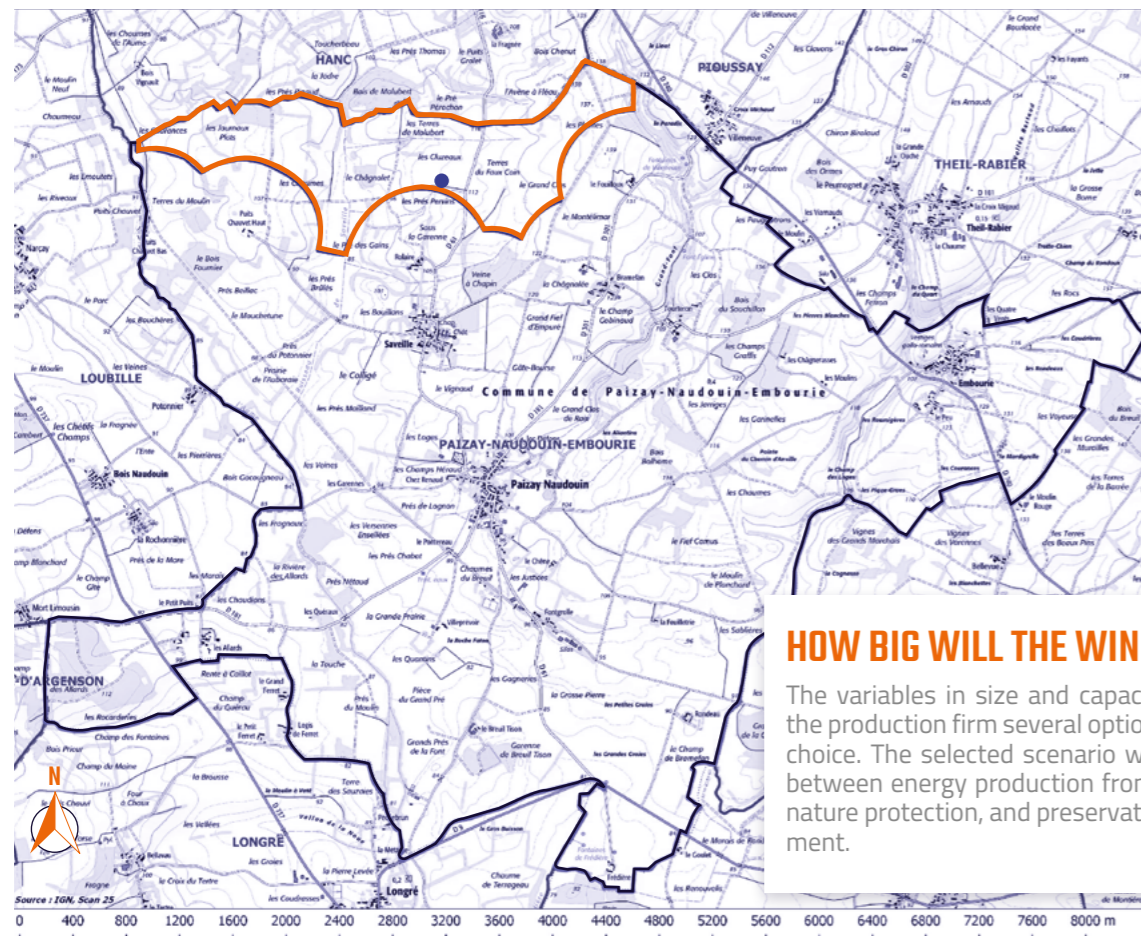
SOLVÉO Énergie produces wind and solar power. It uses renewable sources of energy in close collaboration with local regions. For this, it draws on the experience and expertise of its 40 talents. In the company's approach, an important role is given to dialogue and meetings with its host regions.

As a French family business, Solvéo Energie carries out projects end to end:

- SOLVÉO both designs and executes its projects.
- SOLVÉO both runs and maintains its energy farms.
- SOLVÉO undertakes to dismantle its energy farm when the farm's operations come to an end.

WHERE IS THE SITE FOR THE PLANNED WIND FARM?

The study area is located about 2km north-east of the village of Paizay-Naudouin-Embourie.



HOW BIG WILL THE WIND TURBINES BE?

The variables in size and capacity of wind turbine give the production firm several options for finding an optimal choice. The selected scenario will ensure a fair balance between energy production from a renewable resource, nature protection, and preservation of the living environment.

All studies for establishing the reference situation were carried out by specialist, independent research units.



Noise Research



Landscape Research



Ecological Research



Environmental Impact Assessment and Application for Environmental Approval

On the project website, you can find out more about what they concluded: www.parceoliendeschaumes.fr

RESEARCH ON NOISE WHEN DEVELOPING THE PROJECT



Regulations stipulate that a new facility should not make **noise louder than 5 decibels at daytime** and **3 decibels at night-time** compared to the reference situation. **Residual noise (reference situation) should be measured** before a wind farm is built. With these measurements, simulations can help make sure a wind farm respects regulatory thresholds.

A 17-day sound-measuring campaign took place in spring 2020 in the hamlets of Le Fouilloux, Braméfan, Rolaire, Puits Chauvet Haut, Puits Chauvet Bas, Bois Vignault (Hanc) and La Fragnée (Hanc).

INVOLVING THE ON-THE-GROUND EXPERTISE OF LOCAL RESIDENTS

The seven choices of measuring sites for placing sound level meters were discussed and given the go-ahead by people with excellent knowledge of local noise: the inhabitants of Paizay-Naudouin-Embourie who took part in the consultative committee's first session of talks.

A project that fully meets the Ruffécois province's recommendations and aims to be exemplary

- ?! An ambitious approach to dialogue throughout the project
- 🌱 A project that meets standards that are even higher than those of legal obligations for integration into landscapes and distancing from homes
- % Support measures amounting to 1% of the project's budget
- € A project open to participative funding

DID YOU KNOW?

An operating wind farm generates important tax revenues for the municipality, the local federation of municipalities, the local department, and the local region.

Municipalities directly obtain 20% of these tax incomes.

WHERE ARE WE UP TO IN THE PROJECT'S PROGRESS?

It takes several years for a wind farm project to be carried out. Once a zone for study has been chosen, and before an application for approval has been sent, pursuant to regulations on ICPE sites (facilities in France that pose a risk in environmental protection), four stages are required:

FEBRUARY 2019 - APRIL 2020

1 Assessing the local area
The aim is to closely study the local area to spot challenges in ecology, noise and landscape, as well as technical and human issues. The 'reference situation' is used as the term for this phase's conclusion. Independent research units carry out these studies.

MAY 2020

2 Putting forward scenarios for installing the wind turbines
Once all these assessments are done, several scenarios for installing the wind turbines are put forward and analysed in regard to restrictions

JUNE 2020

3 Deciding on a definitive scenario
The definitive scenario is decided on a cross-analysis of all issues as stated in the reference situation. It defines the number, exact location, type and height of the wind turbines, and access roads to the wind farm.

JULY - AUGUST 2020

4 Assessing potential impacts
Depending on the location chosen, all impacts on the local area are identified and measured. Measures for avoiding, reducing and offsetting are defined, and support measures are decided on alongside the local area.

AN ONGOING PROCESS FOR CONSULTING AND INFORMING

WHAT FOR?

In carrying out this wind farm project, Solvéo aims to fully respect its host zone. For this reason, Agence Tact was commissioned to organise a consultative process. This approach will give local residents the chance to find out about the project and put forward a series of support measures alongside Solvéo.

+ HOW CAN YOU LEARN ABOUT THE PROJECT AND TAKE PART IN THE CONSULTATIVE PROCESS?

From mid-June, you can find extra information online on the project website:
www.parcceoliendeschaumes.fr

- DIALOGUE WITH LOCAL RESIDENTS -

A channel of communication for receiving precise answers to your concerns.

- 1 Let us know how you view the project and ask us any questions you have about it by filling in and sending back the inquiry form enclosed with this news bulletin, or by filling it in on the project's website.
- 2 Make the most of live discussions with the project team in a special meeting (either in small working groups or short one-to-one sessions, depending on your responses and on any change in recommendations from the French government regarding health precautions).

- THE WIND FARM CONSULTATIVE COMMITTEE -

You can take part in talks on the project. They are open to all and designed to help people better understand the plans. They also give you a chance to help define the support measures.

Two sessions took place in winter 2020.

In these talks, participants got the chance to ask their questions, share their comments and make suggestions about the research or consultation process. A meeting report was written up after each session. On the website, you can read these reports, as well as the latest news on the project.

Would you like to join these talks and take part in future sessions*?

E-mail us at audrey.benassi@agencetact.fr or phone us on +33 (0)6 51 80 62 81

* These sessions will take place with protective hygiene measures in place. For people who cannot physically come to the meetings or who do not wish to do so, remote participation will be made possible.

+ INFORMING AND CONSULTING IN THE LONG TERM...

To pursue the worksite and operations phase, Solvéo Energie aims to continue this dialogue on support measures and participative funding while the application is being considered.

THE NEXT STEPS

